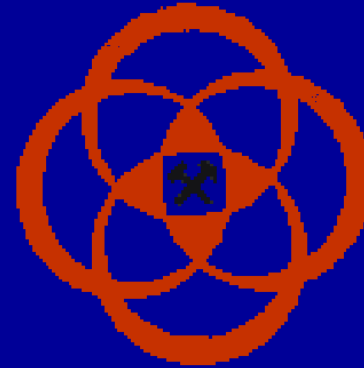


CHINA'S MINE RESCUE SYSTEM AND DEVELOPMENT OF MINE RESCUE 中国的矿山救援体系及矿山救援工作



WANG ZHIJIAN

**DIRECTOR GENERAL ,STATE MINE RESCUE COMMAND
CENTER OF STATE ADMINISTRATION OF WORK SAFETY**

CHINA'S MINE RESCUE SYSTEM AND DEVELOPMENT OF MINE RESCUE 中国的矿山救援体系及矿山救援工作

1 Overview of Mine Rescue History in China

中国矿山救援发展回顾

2 Existing Mine Rescue System

现行的矿山救援体系及开展的工作

3 Prospect for Future Rescue System Construction and Rescue Work

今后矿山救援体系建设及矿山救援工作展望

4 Preparation for V International Mine Rescue Contest

为第五届国际矿山救援技术竞赛做准备

Overview of Mine Rescue History in China

中国矿山救援发展回顾

1.1 Creation and Development of Mine Rescue Troops

矿山救援队伍的创建及发展

In 1949, 3 coal mine rescue teams with 66 members were set up.

1949年，3支矿山救护队，矿山救护队员66人

By 2005, we have 76 mine rescue brigades, 449 middle sized teams and 1445 mine rescue teams with 14328 team members

2005年，76支矿山救护大队，救护中队449支，救护小队1445支，矿山救援人员14328人。

Overview of Mine Rescue History in China

中国矿山救援发展回顾

1.2 Mine Rescue Management System and Base of Legal System

(矿山救援管理体制与法律基础)

From 1949 to 1999, Dept. of Safety of Ministry of Coal Industry and the State Commission of Economy and Trade was carried out for the mine rescue

1949年 - 1999年，煤炭工业部和国家经贸委负责矿山救援工作

Since 2000, State Administration of Work Safety was responsible for the mine rescue

2000年至今，国家安全生产监督管理总局负责矿山救援工作

Overview of Mine Rescue History in China

中国矿山救援发展回顾

Mine Safety Law of the People's Republic of China was issued in 1993

1993年,颁布实施《中华人民共和国矿山安全法》

Safety Production Law of the People's Republic of China was issued in 2000

2002年,颁布实施《中华人民共和国安全生产法》

Regulations of coal Mine Rescue was issued in 1956 and was revised for three times from 1978 to 1995.

1956年,颁布实施《煤矿救护规程》,1978年~1995年三次修订

Overview of Mine Rescue History in China

中国矿山救援发展回顾

Regulations of Coal Mine Rescue regulated that:

(1) Each mine should have one mine rescue team to provide service for it. 所有煤矿都必须有矿山救护队为其服务

(2) After serious mine emergency, mine rescue center should be established immediately, superintendent of the mine is the chief commander, and mine rescue team captains are the members of command.

矿山发生重大事故后，立即成立抢救指挥部，矿长任总指挥，矿山救护队长为指挥部成员

(3) Rescue team should send off with one minute after alarming.

矿山救护队在接到事故报警后，必须在1分钟内出动

(4) Mine rescue team provides its service within a radius of 100km, and middle sized team within 10km, that is within 15 minutes of driving.

矿山救护队与矿山救护大队的服务半径为100km，矿山救护中队距服务矿井一般不应超过10km，行车时间一般不超过15分钟。

Overview of Mine Rescue History in China

中国矿山救援发展回顾

1.3 The problem of mine rescue(矿山救援工作存在的问题)

1.3.1 The old mine rescue system is not suitable for present situation mine rescue

旧的矿山救援管理体系不适应新时期的矿山救援工作

1.3.2 The lack of bankroll aggravated the lag of advanced mine rescue equipment

资金投入不足,导致先进的矿山救援设备缺乏

1.3.3 Lacking of systematic research for mine rescue

对矿山救援理论缺乏系统研究

Existing Mine Rescue System

现行的矿山救援体系及开展的工作

2.1 mine rescue system(矿山救援管理体系)

2.1.1 Mine rescue management system

矿山救援管理系统

2.1.2 Mine Rescue Troops System

矿山救援队伍系统

2.1.3 Mine Rescue Technical Support System

矿山救援技术支持系统

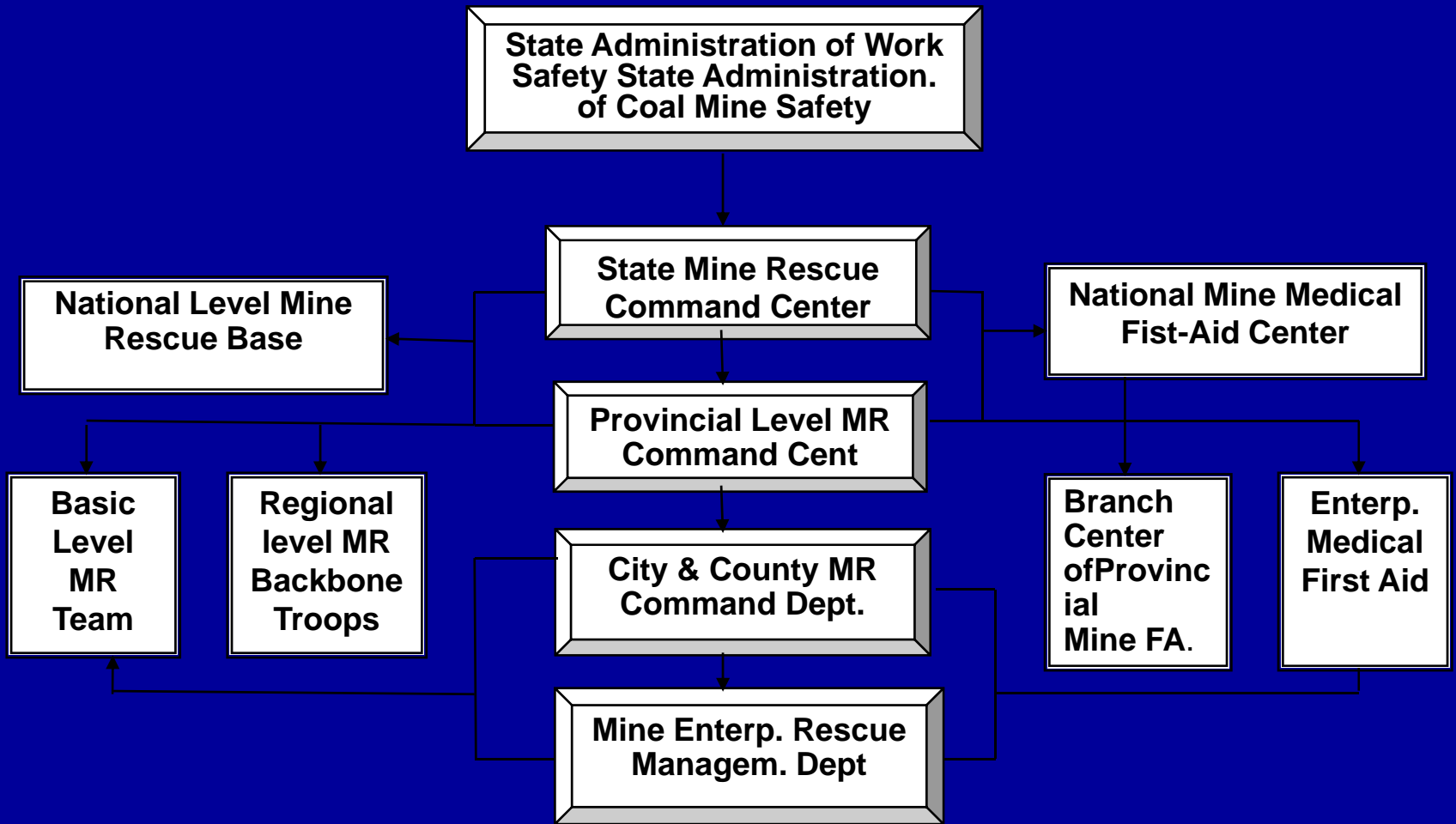


Fig. 1 Mine Rescue Management & Troops System



National Mine Rescue Base Distribution

Hegang Base, Pingzhuan Base, Kailuan Base, Datong Base, Tongchuan Base, Gansu Base, Furong Base, Liuzhi Base, Guangxi Base, Jiangxi Base, Xinjiang Base, Huainan Base, Pingdingshan Base, Yanzhou Base

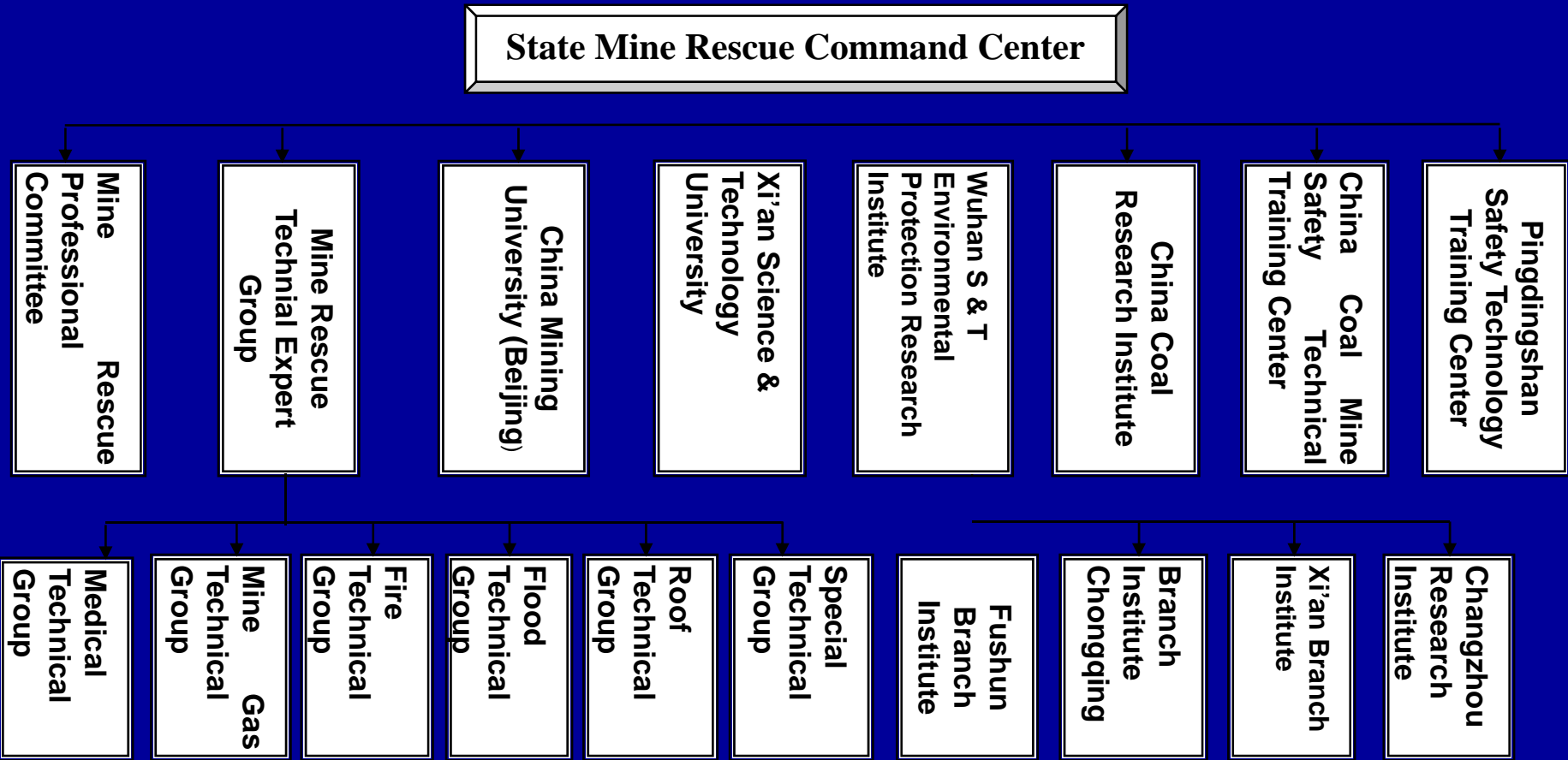


Fig.3 Sketch Map of Mine Rescue Technical Support System

Existing Mine Rescue System

现行的矿山救援体系及开展的工作

2.2 Operation Mechanism of Mine Rescue System

(矿山救援体系运行机制)

2.2.1 Response Mechanism by Different Levels to Sudden Accident

(应对突发事件的应急响应机制)

2.2.2 Positive Provision Mechanism

(积极预防机制)

2.2.3 Training and Drill Mechanism of Mine Rescue Troops

(矿山救援队伍的培训演练机制)

Existing Mine Rescue System

现行的矿山救援体系及开展的工作

2.3 Main Work Done Since the Mine Rescue System Established (矿山救援体系建立以来开展的主要工作)

2.3.1 Important Role Played in Accident Rescue (在事故抢险救灾中发挥了重要作用)

2.3.2 Construction of Mine Rescue Regulations, Criteria and Emergency Plan Pushed Forward (推动了矿山救援的标准和预案建设)

2.3.3 International Exchange and Cooperation Strengthened (加强了国际交流与合作)

2.3.4 Mine Rescue Troops Strengthened (矿山救援队伍得到加强)

Prospect for Future Rescue System Construction and Rescue Work

矿山救援体系建设及矿山救援工作展望

- (1) Further strengthen and perfect the construction of mine rescue management and troops system. All provincial level mine rescue command centers will be established.
(加强和完善矿山救援管理和队伍系统建设)
- (2) Strengthen the construction of the technical support system of mine rescue
(加强矿山救援技术支持系统建设)
- (3) Strengthen training and drill to mine rescue troops.
(加强矿山救援队伍的培训和训练)
- (4) Build and perfect the mine rescue communication and information system
(建立完善矿山救援通讯系统)
- (5) Strengthen international mine rescue exchange and mine rescue cooperation
(加强矿山救援的国际交流与合作)

Preparation for V International Mine Rescue 为第五届国际矿山救援技术竞赛做准备

Contest Time: September 15~16 ,2006

竞赛时间:2006年9月15日 ~ 16日

Contest place: Pindingshan city,Henan provice,PRC

竞赛地点:中国河南省平顶山市

Contest Theme: Colaboration,Exchange,Promotion,Development

竞赛主题:合作、交流、提高、发展

Preparation Circs: Every preparation of contest is going well according to scheme.

准备情况:各项准备工作都在按计划进行进展

Preparation for V International Mine Rescue 为第五届国际矿山救援技术竞赛做准备

THE HALL FOR THE FIFTH INTERNATIONAL MINE RESCUE CONTEST

平顶山工业职业技术学院是一所面向煤炭企业服务为主的高职院校，拥有体育馆和标准化的运动场、网球场，文体体育活动设施齐全，开设有矿山安全工种专业和相关实验实习场地，交通通讯条件极为便利，环境整洁优美，场地宽敞，具有先进配套的设施。

第五届国际矿山救援技术竞赛场馆位于平顶山工业职业技术学院，建筑面积6891.32平方米，占地面积5280平方米，平面形式为长方形，南北方向总长119.48米，东西方向宽43.6米，总高度为18.6米。内设两个标准救援技术竞赛场地。

Pingdingshan Vocational & Technical College of Industry is a higher vocation college which serves the coal enterprises. The College owns sports hall and standard playground and tennis court with complete facilities of physical exercises. It has offered mine safety major and related experimental and practical fields. The College has convenient traffic conditions and graceful environment, broad field and advanced supporting facilities.

The hall for the Fifth International Mine Rescue Contest is located in Pingdingshan Vocational & Technical College of Industry with a building area of 6891.32 m², covering an area of 5280m². The flat form of the hall is rectangle. It runs 119.48 m from south to north, 43.6 m from east to west and the total height is 18.6m. The hall has two standard rescue contest fields.



平顶山工业职业技术学院全景
The Panorama of Pingdingshan Vocational & Technical College of Industry



第五届国际矿山救援技术竞赛场馆
The Hall for the Fifth International Mine Rescue Contest



第五届国际矿山救援技术竞赛会展中心
The Exhibition Center of the Fifth International Mine Rescue Contest



学院之夜
The College Night

Preparation for V International Mine Rescue 为第五届国际矿山救援技术竞赛做准备

平安大厦 ★★★★★ PING'AN BUILDING

平安大厦位于中国河南省平顶山市中心，是平煤集团公司下属的一座四星涉外酒店，占地8000平方米，总建筑面积15735.79平方米。酒店集餐饮、住宿、会议室、美容美发、洗浴桑拿、健身、娱乐、商店等为一体，功能齐全的现代化的酒店总投资1亿元人民币。酒店所处位置优越，交通便利，配套设施齐全，环境优雅。

Ping'an Building, situated in the downtown of Pingdingshan, Henan Province, China, is a four-star foreign-concerned hotel under the jurisdiction of Pingdingshan Coal (Group) Co., Ltd. It covers an area of 8000 m² with the total building area of 15735.79 m². The hotel is a multifunctional modern hotel with a total investment of RMB100 million Yuan integrating food and beverage, accommodation, meeting room, hairdressing, bath and sauna, body-building, amusement and shopping. The hotel possesses superior position, convenient traffic, complete supporting facilities and elegant environment.



平煤集团职工休养院 WORKERS' REST HOME OF PINGDINGSHAN COAL(GROUP)CO.,LTD.

平煤集团职工休养院位于平顶山市白龟山水库东北隅，占地面积8万平方米，三面环水，一面靠山，绿化面积达到可绿化面积的97%。拥有13栋各有特色的休养楼，会议厅、网球场、高尔夫球场、健身路径、健身器材、乒乓球室、台球室等设施齐全。院内绿树参天、环境优美、风景秀丽。亭台雕塑、小桥曲径、喷泉假山同绿树掩映下的楼阁相映生辉。

Workers' Rest Home of Pingdingshan Coal (Group) Co., Ltd. is situated in northeast corner of Baiguishan reservoir in Pingdingshan, covering an area of 80,000 m². Its three sides were surrounded with water and one side with mountain. Its greening areas reached 97%. It has 13 recreation buildings with different characteristics and it has complete facilities such as meeting room, tennis court, golf course, body-building roads, body-building equipment, ping ball room and billiard room and etc. There have high green trees, graceful environment and beautiful scenery. Sculptures of pavilions, maze of small bridge, fountain, rocky and pavilions under green trees add splendor.



Welcome to China!



Welcome to China~

THANK YOU

